

MOVEMAG



CORPORATE HEALTH

The decisive factor in today's strategic corporate management and how it can succeed.

MADE IN GERMANY

Find out how customised ergonomic solutions and uncompromising quality make all the difference.



About us 04-05

The problem – Aeris, the solution 06-11

Each hurdle an opportunity 12-15

Made in Germany 16-19

The Aeris Active Office 20-23

Office Chairs 24-37

Conference Chairs 38-53

Standing Chairs, Desks + Mats 54-65

Because New Work doesn't
work on old furniture.

About us

25 years of healthy, energetic offices. At Aeris, our family-owned company, we design each of our products with the comfort and well-being of the user at the centre. Our philosophy is based on the belief that a healthy work environment is the foundation for productivity and satisfaction.

By integrating innovative ergonomic solutions, we are able to design workstations that not only support physical health, but also promote mental well-being. Our products are designed to support the body's natural movements, prevent muscle tension and improve circulation.

The result is working environments that significantly increase employee satisfaction, reduce stress and increase the commitment and motivation of the workforce. With our ergonomic solutions, we help to ensure that employees feel comfortable in their working environment and can perform at their best.



THE PROBLEM:

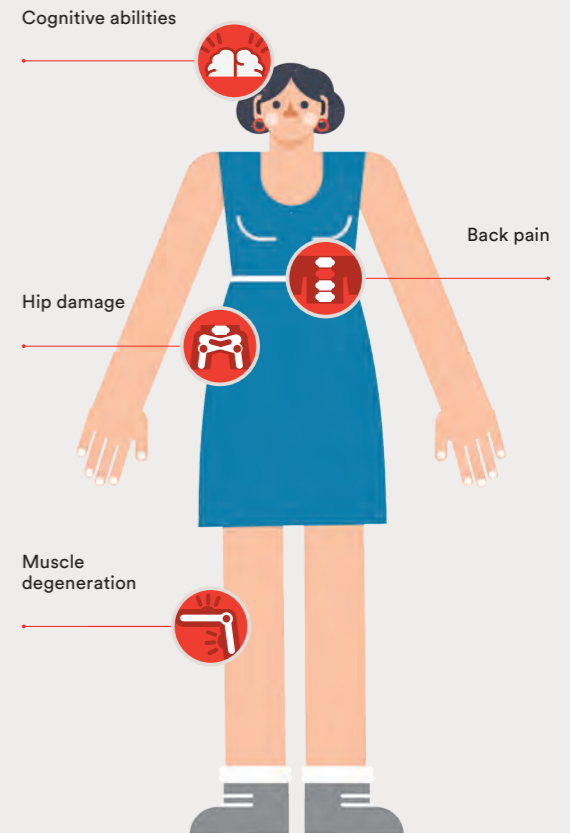
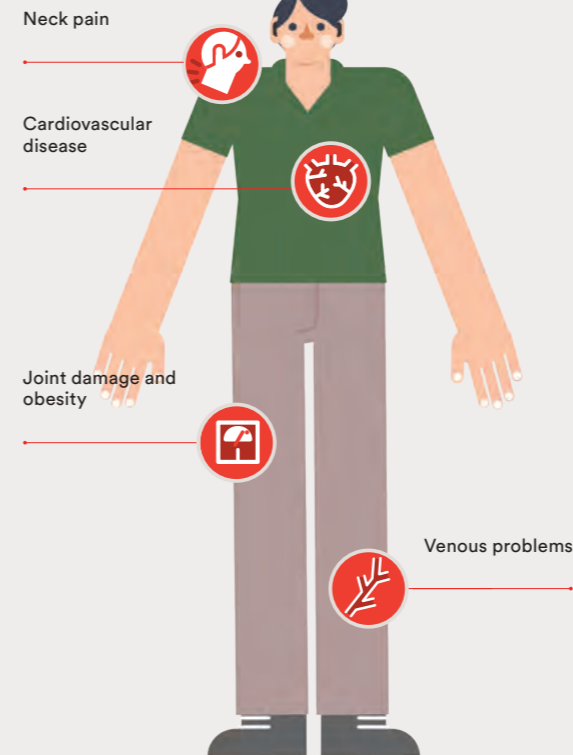
WE SIT TOO MUCH AND GET NOT ENOUGH MOVEMENT!



Lack of movement robs us of our concentration, energy and creativity after just a short time. Almost all modern diseases of civilisation, such as diabetes, cardiovascular diseases, back pain and many others, can be traced back to a drastic lack of movement. 80% of all employees have experienced back pain at some point in their working lives.

On average, we only spend 3-4 hours a day being active. The rest of the time, we spend in a seated position. The reason for this is simple: our workplaces are designed so that we have to move as little as possible. Even if we do additional sports or take the bike to work, we still sit for most of the day. Another problem: the home office trend is making this situation even worse.

A STATIC WAY OF LIFE IS HARMFUL TO OUR HEALTH.



WE HAVE TO ACT!

9,2 HR SITTING

is how much time Germans spend at work each day. That's half an hour more than in 2021 and over 1.5 hours more than in 2015.¹

1500 STEPS

is the average distance travelled each day by employees today. By comparison, our ancestors in the Middle Stone Age covered around 17 kilometres a day in search of food.²

96.7 MIO SICK DAYS

were caused by back pain in Germany in 2022. That is more than half as many as in 2013.³

31 % MENTALLY ILL

Almost a third say that they are currently suffering from depression, anxiety disorders or other mental illnesses. Among those under 25, the proportion is as high as 41 per cent.⁴

12,4 BN. EUR PRODUCTION DOWNTIME COSTS

The number of days lost due to back pain in the German economy in 2022.⁵

THE EFFECT OF THE AERIS ACTIVE OFFICE CONCEPT

40 MIN

less per day you sit at a workplace equipped with Aeris products.⁶

82 %

felt more comfortable and relaxed at an Aeris workstation.⁶

75 %

felt more focused and productive than at a conventional workstation.⁶

A 15% improvement in reaction time achieved by Aeris products leads to a measurable increase in labour productivity. Overall, productivity could be increased by 10% and the error rate reduced by 15%.⁷

THE

OUR MOVEMENT PHILOSOPHY



SOLUTION

At Aeris, we enable movement exactly where you least expect it, but most need it – when sitting and standing. Our products use the patented Aeris 3D technology. This enables movement in all three dimensions: back and forth, to the sides and – uniquely at Aeris – up and down.

We owe our undisputed leadership in the field of dynamic seating to this 3D technology, which Aeris developed over 25 years ago for the Aeris Swopper. Since then, we have implemented this technology in many other products and added even more unique and innovative developments over the years. With an eye on more...

Interview: Every hurdle an opportunity.

How Aeris is setting new standards in corporate health and quality of life by creating an active office that contributes to the well-being of employees. Patrick Wurm, Chief Growth Officer at Aeris, explains how to hold your own against strong national and international competition.



Interviewer: Aeris has made a name for itself in the office furniture market. Namely, as a brand that delivers real added value in terms of health. What sets you apart from other manufacturers, especially from large corporations in the furniture industry?

Patrick Wurm: In Germany, around 96.7 million sick days are taken due to back pain every year. About a decade ago, this figure was still around 40 million sick days. So it has more than doubled! This development is terrible. We are driving the system to the wall and therefore have to do something about it quickly. In addition to the personal impact on the people affected, these illness-related absences led to production downtime costs of 12.4 billion euros for the German economy in 2022 alone. And that's just for back pain, not to mention mental health disorders and other illnesses. Corporate health is therefore more urgent than ever, and that's exactly where we come in.

The key difference lies in our relentless focus on 'real' ergonomics instead of empty marketing phrases and in our consistent orientation towards promoting human health and quality of life. While large corporations often offer standardised solutions in mass production, we concentrate on customised products based on human physiology and can thus respond to the health needs of our customers in a targeted manner.

Interviewer: Don't all manufacturers say that their products are specifically designed to meet customer need

Patrick Wurm: Yes, of course. That's exactly what the problem is. Everyone says that today. And from the customer's point of view, it is often difficult to see which product really adds value and improves the quality of life for employees. But we can prove it. In many cases, our chairs consist of up to 200 individually developed parts, with often no element – except for the screws – being standardised. In addition, scientific studies prove the effects of our special technologies and concept

What is special about Aeris is that we do not primarily focus on metric adaptation, i.e. size or weight, when developing our products. Rather, we consider the human being holistically – as a unity of body and mind. And we know about the essential value of movement for this system and make it the basis of every new idea. To this end, we are in constant dialogue with orthopaedists, movement scientists, universities and institutes. The development of a chair that offers a noticeable plus at all levels often takes several years.

Incidentally, our 'Made in Germany' philosophy is not just a marketing ploy either; for us, it is the only coherent approach. In addition to the highest quality, precision and reliability, it allows us to meet our customers' increased demands for regionality, sustainability and environmental awareness. Today, this is a central concern for many people, above and beyond the function of the product. With us, our customers not only receive a high-quality health product, but also a piece of sustainable German engineering and craftsmanship.

Interviewer: You say demonstrably? Do you have specific data that shows the added value that this effort brings to companies, for example?

Patrick Wurm: Yes. Every chair we produce is the result of intensive research and customised development to improve the health of each individual user in the long term. An active office concept from Aeris promotes active sitting, encourages regular changes of position and supports an upright posture. The University of Mainz, for example, conducted a study with our products and 24 subjects. Here, our products were tested against conventional office furniture.

The results are impressive. An active office from Aeris leads to a 10% increase in labour productivity for companies and end customers. In addition, an EEG study with 45 subjects from the Institute of Sports Science at the University of Mainz showed that Aeris products improve reaction time by 15%

and reduce the error rate by 15%.

Interviewer: What challenges do you see as a result of your focus on non-standardised materials and the high development costs associated with them?

Patrick Wurm: The challenges are indeed considerable for a company of our size. The development and production of chairs, where every single part is custom-made and manufactured using special tools, requires immense investments. For a medium-sized company, this individual approach not only entails high financial investments, but also increased investments in production and quality assurance.

Nevertheless, we have chosen to take this path because, ultimately, these challenges define our DNA, our uniqueness, our strength and our success. The investments we make enable us to create exceptional products that stand out clearly from standard solutions and bring real innovations to the market. This is what sets us apart and what we are particularly proud of.

Interviewer: How can a medium-sized company be heard and be visible as a medium-sized company against large national or even huge international conglomerates?

Patrick Wurm: Aeris invented active sitting almost 30 years ago, which moves the body in all three dimensions. Nowadays, everyone talks about 3D movement, but a real and healthy vertical movement is always missing. However, it makes a big difference for the back and the whole body. It is only available from Aeris. In some cases, there is even talk of 4-dimensional movement, which of course makes no sense at all unless you see time as the 4th dimension. This is not a problem for us, but from the customer's point of view, it is often very difficult to see which movement offers real added value.

Our products have to be 'owned' in the truest sense of the word. Anyone who has felt this difference once knows what I am talking about. Once you've experienced the difference, you can't go back to a rigid office chair. We also have partners who give products to companies to test for up to 30 days free of charge because they know that these products do a thorough job of 'convincing' people on site and don't come back.

Interviewer: In times when low-cost providers like Temu are flooding the market: How do you position yourself in terms of price?

‘The investments we make enable us to create exceptional products that stand out clearly from standard solutions and bring real innovations to the market.’



Patrick Wurm: Our price reflects not only the costs of development and production, but above all the value that we offer. We cannot and do not want to compete with mass producers, whose low prices are at the expense of quality and often enough also at the expense of user health. Our chairs are not disposable products, but a long-term and sustainable investment in health and well-being. Our customers know that when they buy from us, they are not just buying a chair, but a piece of quality of life.

If you don't suffer from pain yourself, you often think that being free of pain is normal. However, if you suffer from daily pain or know people who struggle with constant pain, you know how debilitating and restrictive it can be for the quality of life. In a broader sense, we are therefore not only working on selling chairs, but also demonstrably helping tens of thousands of people every year to sustainably improve their quality of life. This also reduces the number of sick days in companies.

Interviewer: How does Aeris GmbH ensure that its products are developed sustainably?

Patrick Wurm: Here, too, our contribution is not limited to the collection of certificates with the greatest possible marketing appeal. We have created a comprehensive, solid sustainability concept for all areas of our operations. One of the most important aspects for us, which is often overlooked, is that our products have an extremely long service life. They should offer our customers real added value for many years. We also position ourselves firmly against fast furniture and the throw-away mentality. This is an often underestimated contribution to the responsible, sustainable use of resources and energy. We recently received an Aeris Swopper that was 24 years old to refresh it as part of our service. Considering that Aeris has only been around for a little over 25 years, this was an absolute highlight for all of us. From an economic point of view, this kind of quality may not seem to be in line with maximising sales at first glance – but then we would be back to fast-furniture...

Interviewer: What innovation projects is Aeris currently focusing on and how will these influence your future product line?

Patrick Wurm: Our new products will also offer a solution for staying active while sitting for long periods of time, thus counteracting health impairments. In addition to muscular problems, mental health and the sluggish metabolism caused by long periods of sitting are playing an increasingly important role today. The situation has worsened due

to the increase in hybrid working, which is reflected in a rising number of sick leave reports and declining employee satisfaction.

Interviewer: What, in your opinion, is the decisive advantage of Aeris over larger manufacturers?

Patrick Wurm: Quite clearly our brand essence. We have remained true to our motto since the beginning: 'Never just sit'. We have to be faster, smarter and more innovative than the others. We don't have the budget and market power of large corporations, but we do have an authentic brand, a unique USP and a strong team that is always agile, smart and flexible in implementing ideas. That makes all the difference in our favour.

High-tech products

Our product designs are always developed in close consultation with our engineers. This is the only way to ensure that our proven technologies enhance the design language of the chair instead of disrupting it. High-performance materials are used that fundamentally contribute to the functionality of the products.



Handmade in Germany

All our products are hand-assembled in Germany and undergo careful quality control. This not only ensures consistently high quality, but also enables us to respond quickly to specific customer requests and guarantee speedy delivery.



Durability and repair

Quality and durability are our top priorities. However, should a problem arise, our products are designed in such a way that almost all of them can be repaired. Our Aeris repair service is available to ensure that Aeris products accompany the user for many decades.

We source our materials mainly from Germany, particularly from the area near Munich, and a small proportion from neighbouring countries. Short delivery distances ensure efficiency and environmental friendliness. Our products are based on recyclable and recycled materials.



Climate neutrality and certificates

Environmental protection and sustainability are at the top of our agenda. In 2007, solar cells were installed during the construction of our production hall, and we have been constantly expanding their area ever since. We now generate more energy than we need for our own use.

The majority of the textile products used in Aeris products have the Ecolabel, an EU environmental label that stands for environmentally friendly products and services. In addition, the wood we use comes from FSC-certified forests.



THE AERIS

**HOW CORPORATE
HEALTH CAN
REALLY WORK.**

Corporate health is not a new concept, but it is increasingly becoming the focus of holistic development of attractive working environments. It is about recognising and actively using the connection between employee and corporate health. The win-win formula is: 'If the employees are doing well, the company is doing well.' This includes a wide range of activities to promote physical, mental and social health. Corporate health is therefore a fundamental task of strategic corporate management. With Aeris products, this concept can be implemented in each area of an office individually, contributing to the maintenance of mental and physical well-being.



ACTIVE

OFFICE

Stand-Up Meeting and Creative Conference

The aim of meetings and conferences is to make them as informative and productive as possible, in order to make good use of the valuable working hours. The choice of rooms and furniture plays a central role in this. Aeris Swopper, Aeris Numo Comfort and Aeris Muvman bring movement into every meeting, help to create a relaxed atmosphere and, in addition to health, also promote creativ.



Welcome and Wellness

Break rooms are also becoming more diverse. Kitchens, coffee bars and counters integrated into the concept satisfy more than just physical needs. They become reception and meeting areas, serve as spatial figureheads and as break-out zones for temporary work. Keeping the body gently in motion on the Aeris Numo Comfort is only logical if you want employees and guests to feel completely at ease.



Flex Office and Active Work

Desk sharing and flex zones are becoming more and more common in companies due to the decline in face-to-face working hours. The Aeris Numo Task impresses here with its simple adjustment options and movement-promoting properties.

Many people still spend the majority of their working day at a desk in the office or home office. Accordingly, this area offers the greatest leverage in terms of our health at work. The more movement incorporated into our routines, the greater the benefit. Cyclically switching between standing, sitting and stand-sitting is a central approach here. Our Aeris Active Office Desk, the Aeris Muvmat, the Aeris Muvman and an Aeris office chair of your choice optimally support this movement concept.



Active Lounge

Central areas accommodate various functions and serve as places for exchange and recreation. These areas should be designed to be correspondingly flexible. Here, too, the Aeris Swopper is ideal with its versatility, and the Aeris Oyo invites you to relax dynamically. Movement deepens breathing, supports regeneration and general well-being.



OFFICE

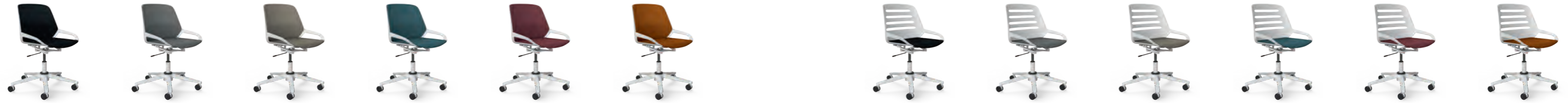
Our office chairs are more than just pieces of furniture. They are daily companions for a more active and healthier working life. With their ergonomic design, they offer comfort and freedom of movement to keep you moving all day long. Concentration and productivity go hand in hand with unique seating comfort. Aeris office chairs offer more than just a place to sit.



CHAIRS

Overview

01. Aeris Numo Task – column with castors



02. Aeris Numo Task – spring strut with castors



03. Aeris Numo – 4-star base with castors



04. Aeris Swopper



05. Aeris 3Dee



Aeris Numo Task column with castors



The lightweight office chair offers an outstanding combination of innovative swinging kinematics and the unique Self-Adjusting-Motion element. This element provides every user with even, pleasant deflection in all directions – regardless of weight. This promotes dynamic sitting, which helps to strengthen the muscles and improve blood circulation.

The retrofittable backrest cushion with integrated lumbar support relieves the back and promotes an upright posture. Thanks to the practical clip-in mechanism, the backrest cushion can be easily installed and removed. The high-quality universal castors enable smooth mobility on different floor coverings, such as carpet, parquet or tiles.

Thanks to its flexible range of uses, the office chair is ideal for modern working environments where mobility and adaptability are required. Whether in an open-plan office, a home office or a co-working space – this chair adapts perfectly to your needs and requirements.



Aeris Numo Task spring strut with castors



The spring strut below the seat kinematics extends the range of motion in the vertical plane. This not only allows for gentle yielding during vertical movements, but also supports the body's natural freedom of movement, which significantly reduces tension and fatigue.

The flexible seat shell, equipped with the patented Aeris kinematics and the self-adjusting motion element, allows for complete 360° mobility. Optionally, the Aeris Numo Task can also be equipped with glides that provide an even better grip. The improved stability brings out the motion technologies even better.

The elegant seat shell, combined with the appealing lamella design, makes this ergonomic office chair a real eye-catcher in any working environment.



Aeris Numo 4-star base with castors



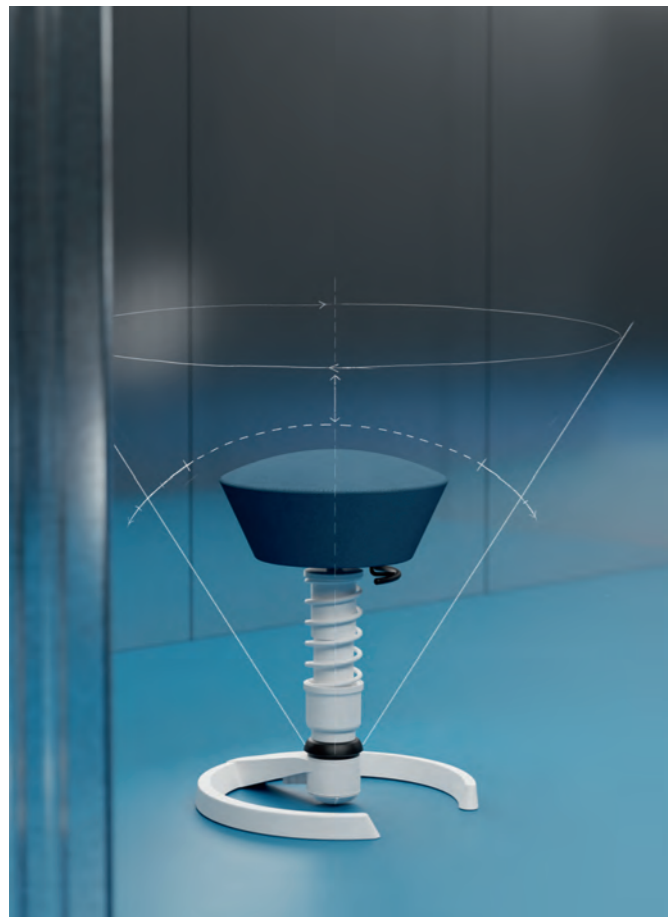
The minimalist office chair impresses with its functional features. Equipped with high-quality castors, this chair offers both mobility and stability. The castors allow for effortless and smooth movement on different floor coverings, be it carpet, parquet or tiles. At the same time, the chair's robust construction ensures that it remains firmly and securely in place without wobbling.

Thanks to the patented Aeris kinematics, the seat shell allows for gentle tilting movements forward and backward. This innovative technology promotes a dynamic sitting posture and helps to activate the muscles. This improves blood circulation and reduces the risk of tension, contributing to a more comfortable and productive work experience.

The simple, modern aesthetics of the office chair blend harmoniously into any office interior and are ideal for both home offices and open-plan offices.



Aeris Swopper



A revolution in seating: as the first three-dimensionally movable office chair, it has fundamentally redefined the way we work. The patented 3D technology enables movement in all three dimensions: forwards, sideways, backwards and – unique to Aeris – up and down. This so-called vertical swinging relieves the intervertebral discs, makes it easier to stand up, promotes blood flow and stimulates the circulation.

The active chair has no backrest at all, which means that – thanks to its design that encourages movement – the back muscles are automatically trained. The wide base with a joint close to the floor ensures stability and allows 360-degree mobility. The convex seat supports an upright posture and prevents pressure on the seat edges.

Its striking design combines exclusivity with functionality, making it a popular element in contemporary office spaces.



Aeris 3Dee



The half-height backrest is equipped with an innovative lamella technology and an integrated lordosis curvature. The lordosis curvature in the backrest is specially designed to follow the natural curves of the spine, thus providing ideal support. The convex seat has a flexible front edge that prevents pressure points and blood congestion in the thighs.

The Aeris spring strut allows flexible movement in all three dimensions. This ensures a dynamic sitting position that supports the body's natural movements, activates the muscles and promotes blood circulation. The spring strut plays a crucial role in minimising the strain on the spine when sitting by gently reacting to movements and cushioning them.

The unique shape of the backrest and the slightly convex seat cushion give the executive chair a striking presence and make it a real eye-catcher in any office environment.



CONFERENCE

Our versatile conference chairs are not just for meetings. They can be seamlessly transformed into co-working and lounge chairs that offer flexibility and comfort in any work environment. With their appealing design and ergonomic features, they promote productivity and relaxation in equal measure. Chairs that adapt to your individual working style and bring a breath of fresh air into any room.



CHAIRS

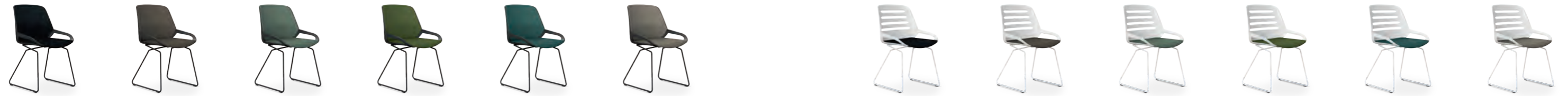


Overview

01. Aeris Numo Comfort – 4-star base with glides



02. Aeris Numo Comfort – skid base



03. Aeris Numo Comfort – wooden legs



04. Aeris Numo Task – column with glides



05. Aeris Numo – 4-star base with glides



06. Aeris Oyo



Aeris Numo Comfort 4-star base with glides



The generously sized seat shell can be fully upholstered for the ultimate in comfort. The backrest cushion, with a practical clip-in mechanism, can be unclipped if necessary to allow good ventilation of the back. The front edge of the seat cushion features Aeris Flexzone technology, which prevents pressure points from the front edge of the seat.

Two patented kinematics allow the seat shell to adapt to the body's forward and backward movements. This results in a more upright posture and promotes blood circulation. The stable base is extremely steady and the seat can be rotated 360°.

With its slim lines and minimalist approach, the conference chair fits seamlessly into any office interior. Its elegant design makes it an eye-catcher that embodies professionalism and style without sacrificing functionality.



Aeris Numo Comfort skid base



The skid-base frame gives this casual variant of the Aeris Numo Comfort series particular versatility. Thanks to the special design, which allows for forward and backward movement, this active chair offers excellent seating comfort – both in conferences and when working at a table. The lumbar support in the optional backrest cushion provides additional comfort.

The proven Aeris Flexzone technology ensures that the front seat edge is flexible. This effectively prevents unpleasant.

The universally applicable skid base frame is ideal for both indoor and outdoor use. The curved metal frame, made from a single piece, gives the piece of furniture an extraordinary elegance. Its seamless form gives every room and outdoor area a modern and stylish flair.



Aeris Numo Comfort wooden legs



The homely conference chair impresses with its appealing design and proven Aeris technologies. The Aeris kinematics ensure a pleasant movement back and forth. The backrest in lamella optics ensures good air circulation at the back in the version without backrest upholstery.

The flexible zone at the front of the seat prevents unpleasant pressure points and blood congestion in the thighs. The retrofittable back cushion with a practical clip-in mechanism is equipped with a lumbar support. This relieves the back and supports an upright posture.

The wooden legs give this version a warm and inviting look that is particularly suitable for lounge and waiting areas. The natural grain and colour of the wood give the chair a timeless elegance that fits seamlessly into a wide range of interior designs.



Aeris Numo Task column with glides



The gliders give this variant extra stability. The SAM joint inside the base ensures a comfortable lateral deflection. Together with the Aeris kinematics, this creates a completely new sitting experience that leads to less back pain and more productivity.

The lumbar support in the back cushion relieves the back and provides additional comfort. The flexible front edge of the seat cushion promotes good blood circulation to the tips of the toes.

The slim silhouette conceals the complex mechanics that make the chair so versatile and flexible. This harmony between form and function is reflected in every aspect of the chair, from the curved backrest to the elegant glides. This makes this active chair a desirable piece of furniture in any environment where creative work is the main focus.



Aeris Numo 4-star base with glides



The compact conference chair impresses with its well-thought-out design and high functionality. The robust star base with glides ensures stability and sturdiness, which allows the specific technologies to come into their own.

The integrated kinematics mechanism extends the range of motion forward and backward, promoting dynamic sitting. This freedom of movement not only supports the body's natural need for movement, but also helps to activate the muscles and improve blood circulation. As a result, the user feels physically comfortable and mentally active even during longer meetings.

Its minimalist appearance blends harmoniously into any space. This aesthetic clarity not only creates a tidy and modern atmosphere, but also maximises the available space, making this chair an ideal choice for smaller meeting rooms and more cramped office areas.



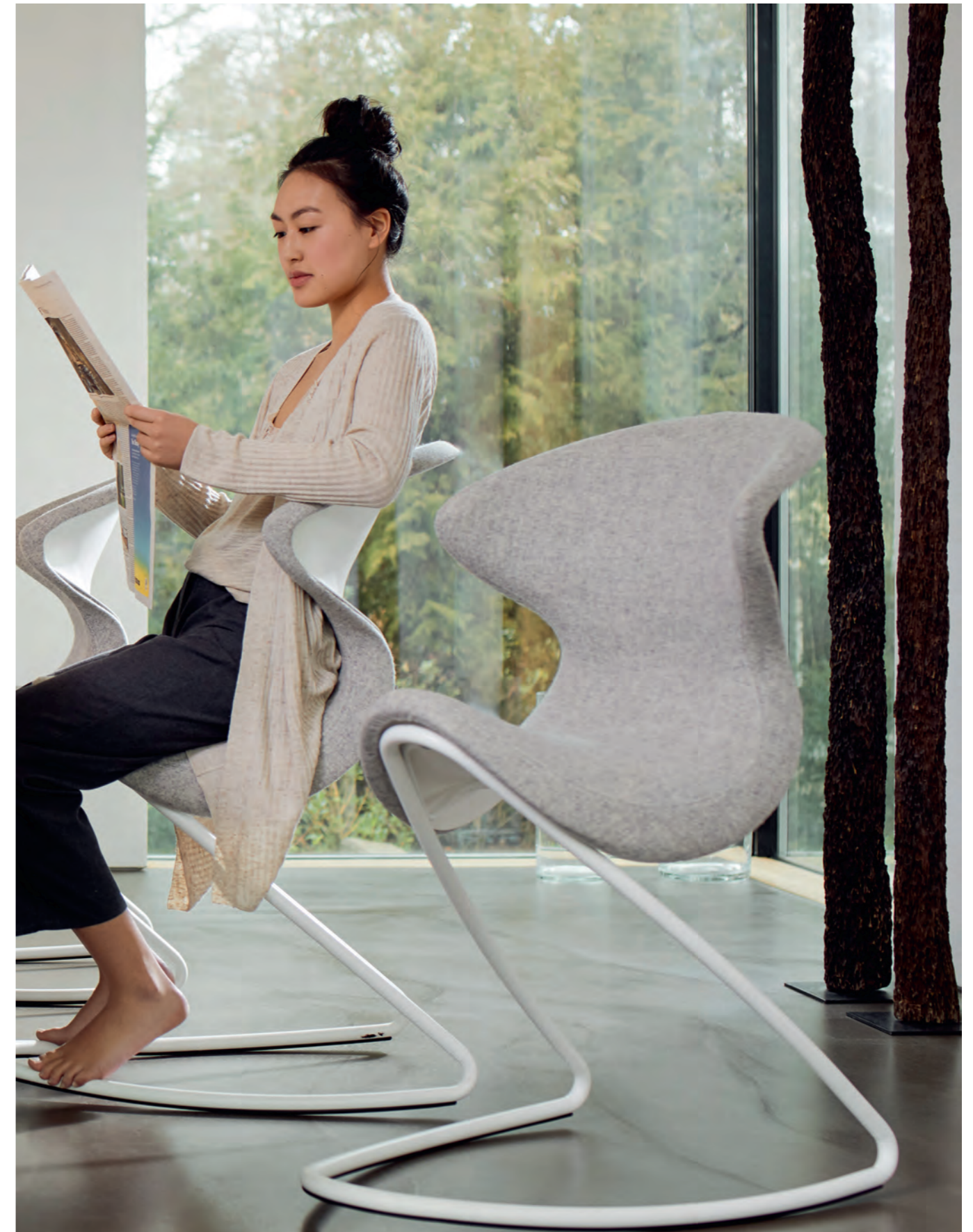
Aeris Oyo



A rocking chair with a difference: the special design of the seat shell invites you to try out different sitting positions – whether that's leaning forwards, sideways or even backwards. The five-centimetre-thick foam cushioning under the cover ensures maximum comfort.

The skid-base frame allows a rocking motion that is not only fun, but also stimulates the mind and keeps you alert. The saddle seat is specially shaped to encourage an upright posture.

The timeless design is characterised by two harmoniously coordinated design elements: the seat shell and the sled base frame. These are made from a single piece, creating an elegant ensemble. The slim design fits seamlessly into any lounge or dining area and gives the room a modern and stylish touch.

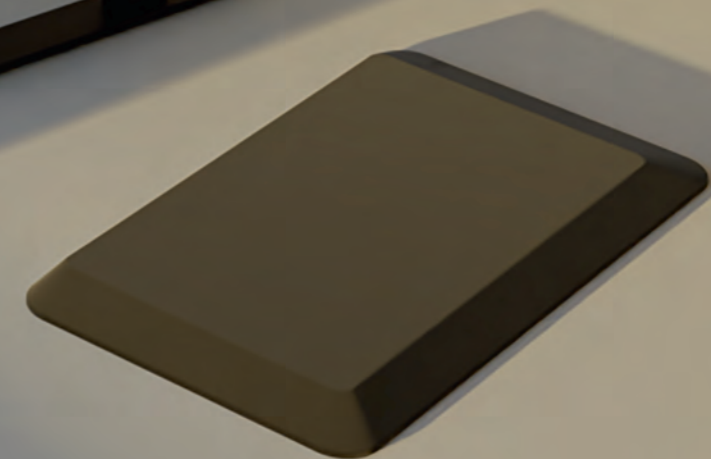


STANDING

Our sit-stand chairs, standing mats and standing tables are the perfect addition to an active working style. The sit-stand chair makes it easy to work standing up, promotes blood circulation and reduces fatigue. The standing mat provides additional comfort and takes the strain off your legs when standing for long periods. Combined with our unique standing tables, they create an ideal working environment that promotes more movement and health in your daily work.

CHAIRS MATS

DESKS



01. Aeris Muvman



02. Aeris Muvman Industry



03. Aeris Muvmat



04. Aeris Active Office Desk



Aeris Muvman



Sit-stand with a variable height adjustment range of 33 cm. The multidimensional movement element in the base plate ensures maximum lateral mobility, extends the reach and supports an optimal posture in relation to the work surface. The flexible centre column of the ergonomic sit-stand chair promotes continuous micromovements that supply the intervertebral discs with nutrients.

The slightly curved seat with Flexzone technology not only prevents pressure points, but also poor posture when standing or sitting, thus ensuring good blood circulation right down to the tips of your toes.

Thanks to its practical carrying handle and slim design, this sit-stand desk is ideal for all workplaces where flexible working methods are required. It can be easily transported and, thanks to its compact design, fits easily into different environments. This makes it the perfect companion for modern, dynamic working environments where mobility and adaptability are crucial.



Aeris Muvman Industry



This sit-stand chair is made of robust materials and has an easy-to-clean surface. The durable materials guarantee a long service life and ensure that the sit-stand chair works reliably even in demanding conditions.

The centre column, which is inclined at an angle of 4°, supports an upright posture and helps to relieve the intervertebral discs. The movement element inside the foot plate allows lateral mobility and thus extends the gripping range.

Thanks to its space-saving design and extremely easy-care materials, this sit-stand desk is perfect for all production locations. What's more, the sit-stand desk is also available in an ESD version, which has been specially developed for use in electrostatically sensitive environments.



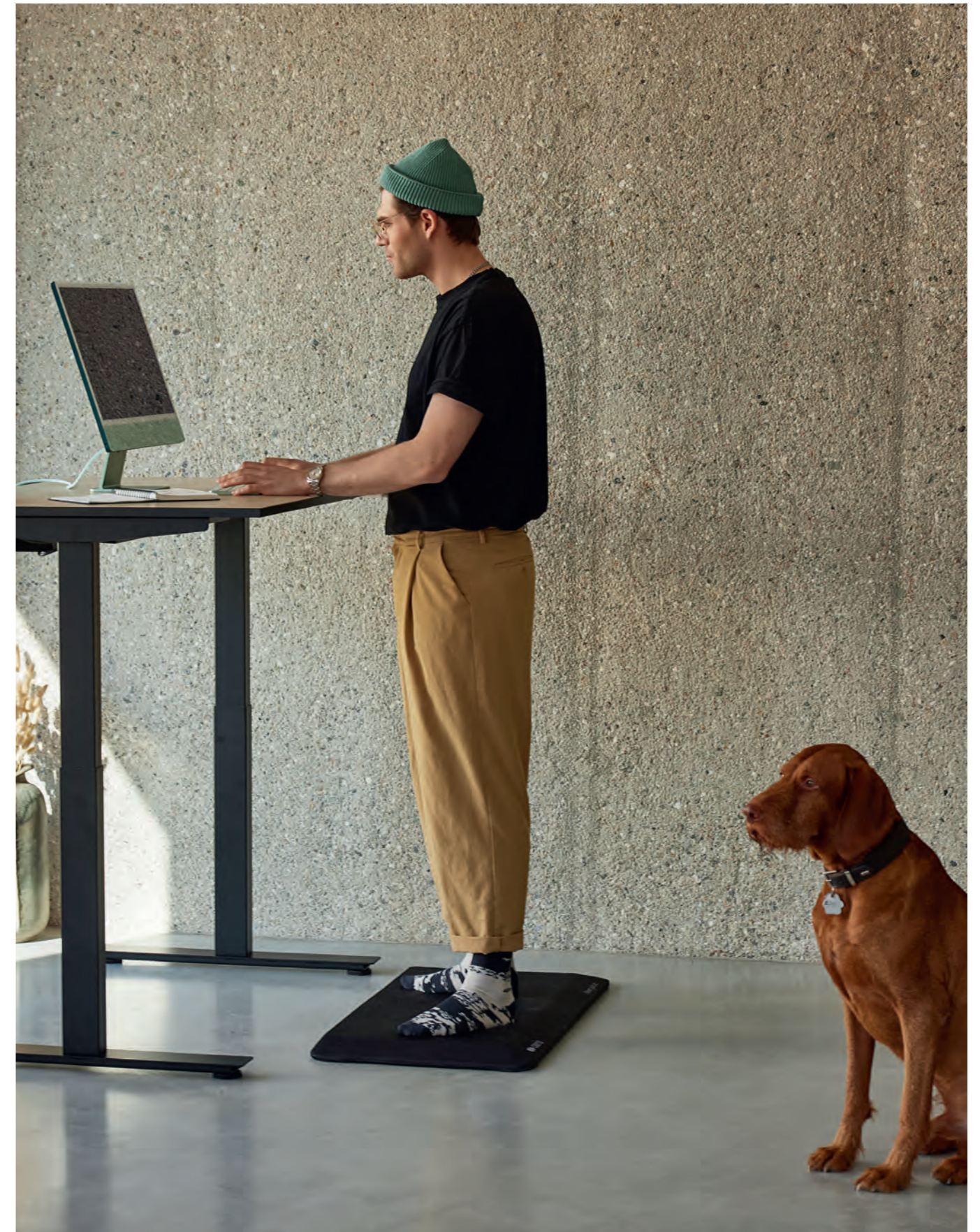
Aeris Muvmat



The standing mat has a unique, topographical 3D structure that gives the feet the feeling of standing on forest soil – or, more precisely, on roots, stones and soft moss. This specifically activates the foot reflex zones, the muscles and the circulation, which has been shown to improve concentration.

The resilient and relieving foam cushioning inside the mat ensures a comfortable standing position and at the same time protects the joints. The bevelled edges in combination with the non-slip pad on the underside of the mat provide safety and optimal grip.

Whether you are wearing shoes, bare-foot or in socks – whether in the office, on the production line, in the laboratory or simply at home: the anti-fatigue mat is effective wherever long periods of standing are unavoidable or desirable.



Aeris Active Office Desk



The height-adjustable double desk is equipped with separate standing and sitting work surfaces. This makes it possible to switch seamlessly between standing and sitting without having to interrupt your work. Studies confirm the positive effects of active working: reduced back pain and muscle tension, a strengthened cardiovascular system, improved concentration, increased productivity and more creativity.

The flexible design allows the standing work surface to be mounted on the right or left, depending on your preference. The practical cable trays, coupled with the cable management, ensure order.

The natural, organic shape with rounded edges makes the double desk a real eye-catcher in any setting. With its numerous combination options, this table combines the characteristics of a modern piece of designer furniture with the greatest possible functionality.



Bibliography and contact details

Aeris GmbH
Hans-Stießberger-Straße 2a
85540 Haar
Germany

+49 (0) 89 - 900 506 - 0
info@aeris.de
www.aeris.de

Image editing and content
Aeris GmbH

Design | Art Direction
MortarPestle.Studio

Sources of figures:

- 1 DKV, 2023, 2015
- 2 Andreas Butz, Manager Magazin 2021
- 3 AOK, 2023
- 4 AXA, 2024
- 5 AOK, 2023
- 6 Müller-Bayreuth, 2019 / EEG 2017
- 7 Müller-Bayreuth, 2019 / EEG 2017, Paula Waibl 2018



Never just sit.

